

# SuiteCloud Platform

*The Ultimate Business Cloud Platform*

## BENEFITS FOR CUSTOMERS

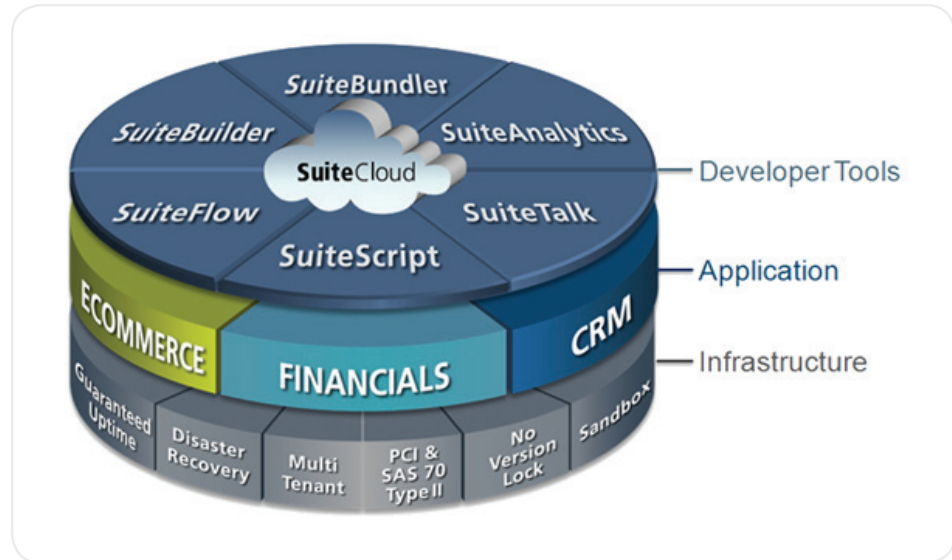
- Powerful tools to tailor and integrate NetSuite for specific business needs
- Eliminates “version-lock” by ensuring customizations always automatically migrate when upgrading to a new release
- Easy-to-use, point-and-click application customization based on open standards
- Enterprise class infrastructure maximizes security, availability and data management

## BENEFITS FOR ISVs

- Get to market faster with cloud-based applications
- Quickly develop deep vertical cloud functionality

SuiteCloud is NetSuite’s comprehensive offering of cloud development tools, applications and infrastructure that enables customers and software developers to maximize the benefits of the cloud.

SuiteCloud comprises a multi-tenant cloud platform that consists of Infrastructure-as-a-Service (IaaS), Platform-as-a-Service (PaaS) and Software-as-a-Service (SaaS) technology. SuiteCloud Developer Tools are uniquely built on NetSuite’s leading cloud business management suite, enabling customers and partners to rapidly extend and integrate NetSuite capabilities for financials/ERP, CRM, ecommerce and more.



*SuiteCloud Provides Complete Cloud Customization Underpinned by Enterprise Class Infrastructure*

## SuiteCloud Developer Tools Features

SuiteCloud Developer Tools provide a comprehensive cloud customization environment, whether extending NetSuite to fit business needs or developing completely new applications. SuiteCloud Developer Tools include workflow management, scripting, analytics, web services and more.

### SuiteBuilder Graphical Customization

SuiteBuilder makes customizing NetSuite application forms, fields and records a simple point-and-click experience.

- SuiteBuilder makes it easy to rapidly represent sophisticated data relationships without complex coding, and also change NetSuite to your company’s own terminology and branding.
- Powerful field and record management makes it simple to add custom fields such as text, date, drop-down lists or images and objects to applications.
- With the ability to customize form fields, sub-tabs and field groupings, it’s efficient to configure just the right form for business needs. SuiteBuilder even enables the construction of custom “centers” and roles geared towards specific user types.

 To find out more, contact NetSuite Inc. at 1-877 NETSUITE or visit [www.netsuite.com](http://www.netsuite.com).

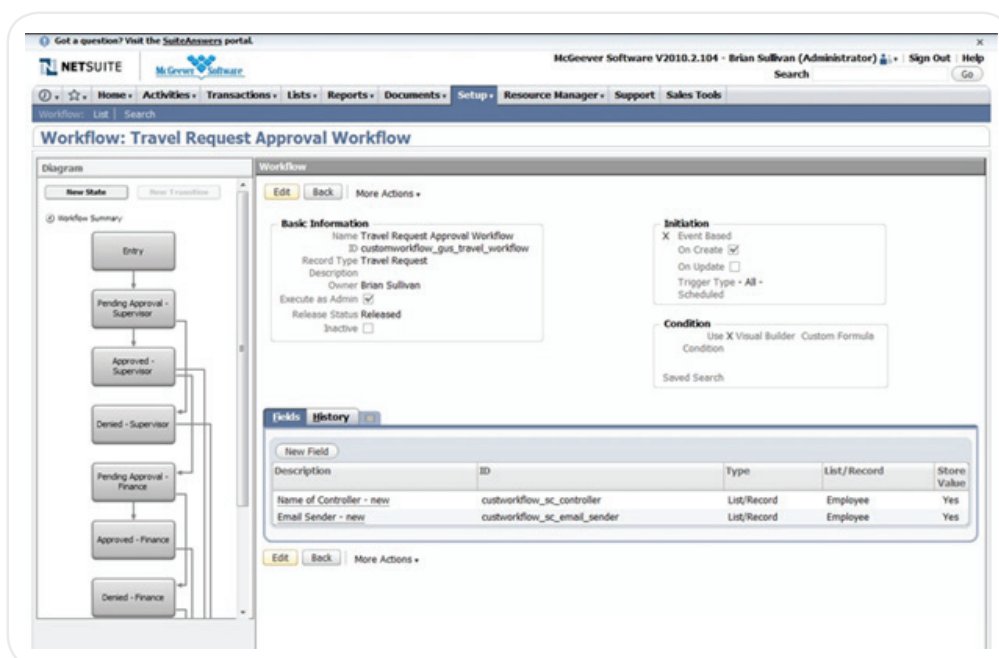
“NetSuite’s core customization and configuration capabilities enabled us to easily build out custom forms and records and tightly map it to our business processes—all without writing a single line of code.”

—Krishnan Borthwick, CIO, Tree of Life

## SuiteFlow Workflow Engine

SuiteFlow provides developers and customers with easy-to-use, point-and-click tools to customize and automate business processes across NetSuite and between other business systems.

- SuiteFlow makes it easy to create business processes such as lead nurturing, collections management, sales discounting approvals, purchase order approvals and more.
- Powerful workflow management makes it possible to specify the triggering events that initiate a workflow, such as when records are viewed, created, or updated—or schedule workflows to run automatically.
- Manage the states the record will pass through in the course of the workflow, and define the conditional actions that will occur when the record enters each state.



*SuiteFlow Provides Click-Not-Code Business Process Management*

“SuiteFlow has helped us collaborate better and create audited, managed approval processes in an easy-to-use graphical environment.”

—Michael Metz, CFO, Lexi-Comp

## SuiteScript Application Development

SuiteScript allows developers and administrators to create flexible business logic within NetSuite tailored to specific business needs—from sophisticated business processes to entirely new applications. Built on industry standard JavaScript that ensures portability and rapid developer productivity, SuiteScript enables full-featured application-level scripting capabilities throughout NetSuite.

- SuiteScript provides a complete set of flexible scripting models to support customization needs, including user event-based scripts, scheduled scripts, client-side scripts, portlet scripts and based on workflow actions.
- In addition, SuiteScript provides a web-based interactive debugger that allows validation and testing of SuiteScript code, providing a powerful debugging toolset with controlled code execution such as step in, out and over as well as execution logs, resolution of local variables, watches and break points.

 To find out more, contact NetSuite Inc. at 1-877 NETSUITE or visit [www.netsuite.com](http://www.netsuite.com).

“NetSuite’s standards-based scripting capabilities are extremely powerful and easy to use. It enables us to quickly tailor NetSuite to meet our ad hoc business needs.”

—Daniel Hirsch, Vice President,  
Cequal Products

### SuiteTalk Web Services

SuiteTalk web services integration makes it easy for customers and developers to integrate NetSuite with existing on-premise investments and third-party cloud applications, build website-to-NetSuite integrations or create lightweight custom mobile applications.

- Enables integration using Java, Microsoft .NET or any other development language that supports SOAP-based web services.
- RESTlet framework for lightweight integrations allows developers to define their own procedures for standard REST functions such as POST, PUT, GET and DELETE.
- Powered by a robust security model that manages service requests using standard NetSuite authentication, authorization, session management and encryption.

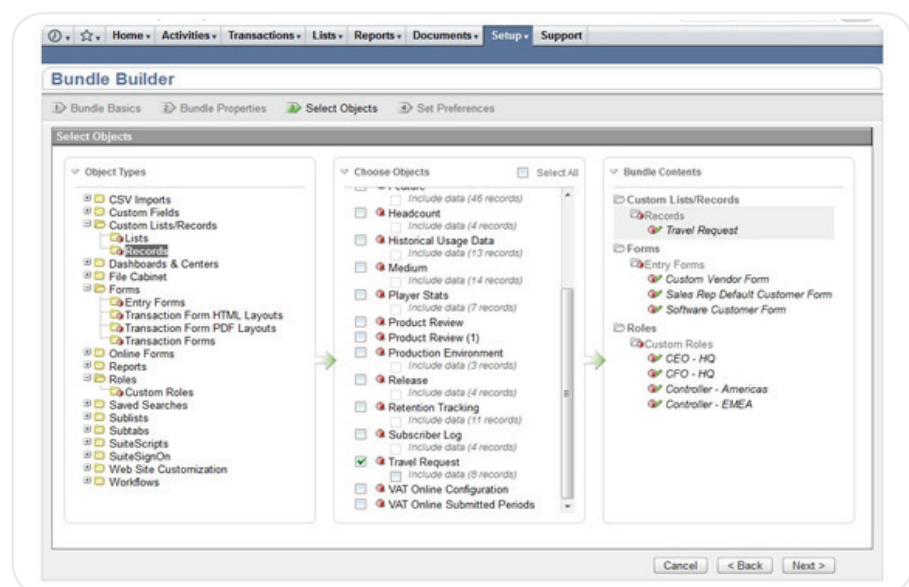
### SuiteAnalytics Business Intelligence

SuiteAnalytics provides embedded business intelligence to any customizations or applications built with SuiteCloud, eliminating the need for developers and IT to deal with the complexities of separate reporting tools, BI cubes or data warehousing.

With its intuitive graphical toolset, SuiteAnalytics enables end-users to self-serve real-time analytics across all areas—financials, orders, customers, opportunities and all custom objects—to quickly get the business answers they need.

### SuiteBundler Application Packaging and Distribution

SuiteBundler makes it easy for partners and end customers to package up and deploy customizations and applications that have been built on the SuiteCloud platform. Whether you’re moving customizations from a sandbox environment to a production environment or you’re an ISV or SI looking to package industry or domain expertise and distribute to thousands of end customers, SuiteBundler makes it easy to “bundle” groups of customizations, manage versioning and deploy customizations nearly instantaneously.



*SuiteBundler Streamlines Lifecycle Management and Distribution*

 To find out more, contact NetSuite Inc. at 1-877 NETSUITE or visit [www.netsuite.com](http://www.netsuite.com).

### SuiteApp.Com Ecosystem

With SuiteApp.com, NetSuite customers gain an online marketplace where hundreds of innovative third-party solutions integrate and extend NetSuite, with industry-specific solutions, line-of-business applications and integration and data management tools.

### SuiteCloud Infrastructure

Since 1998, NetSuite has provided comprehensive data privacy, data management, security and availability for running mission-critical ERP, CRM and ecommerce applications. With its multiple data centers, NetSuite provides enterprise-grade infrastructure while delivering proven scale.

### Application Security

NetSuite provides a host of advanced functionality to secure the application including role-based access, strong encryption, robust password policies and more. NetSuite adds further layers of security such as application-only access and restricting access to only certain IP addresses to provide complete confidence and peace of mind.

- NetSuite provides 128-bit SSL encryption for user login and all subsequent data, the same level of encryption used by online banks.
- Role-based access control ensures users can only use data and application functionality that is related to their responsibilities.
- NetSuite provides fine-grained password configuration options—from minimum password length and complexity to timeframe-based password expiration.
- For additional access control, NetSuite optionally supports multifactor authentication using a simple physical token to further minimize unauthorized access.

### Operational Security

NetSuite employs stringent round-the-clock monitoring tools, controls and policies and a dedicated tenured security team to ensure that it provides the strongest security for its customers. NetSuite has met a host of audit and security standards including SAS 70 Type II audit, PCI-DSS and the US-EU Safe Harbor framework. In addition, NetSuite has modeled its security and risk management processes according to National Institute of Standards and Technology (NIST) and ISO 27000 series of standards.

### Availability

NetSuite is committed to providing its customers with an outstanding experience with system availability. NetSuite's enterprise-grade redundant infrastructure enables it to provide world-class uptime, averaging 99.96% for more than the past five years.

- Guaranteed uptime of 99.5% backed by transparent Service Level Commitment.
- NetSuite maximizes application availability by operating multiple geographically separated data centers.
- NetSuite's applications are housed in enterprise-class data centers include completely redundant internet connections, backup power systems, HVAC systems, fire suppression and are seismically engineered.

 To find out more, contact NetSuite Inc. at 1-877 NETSUITE or visit [www.netsuite.com](http://www.netsuite.com).



Software Satisfaction Award Winner 2011



Best Financial Management Solution



Best Business Software Solution  
Best Relationship Management Solution  
Best Cloud Infrastructure Software



ISM Top 15 CRM Winner



Best Cloud Application 2010



Customer Interaction Solutions  
Product of the Year

To find out more, contact NetSuite Inc. at 1-877 NETSUITE or visit [www.netsuite.com](http://www.netsuite.com).